

YOU ARE THE MOST VALUABLE PARTNER

When we build upon what is already strong, those assets themselves begin to grow and flourish. Like compounding interest in a savings account, we are building strength upon strength and that simply builds more strength. What a joyful cycle to kick start!



What if we, as the body of Christ, saw each other and our various God given ministries as close friends, compadres, co-investors and partners? Then we would truly understand that there is NO competition, NO scarcity, and NO fear in working together. Because we'd realize that working together as one body with many members allows us to be free to live life with the knowledge that resources are not limited, but abundant and as we build upon our assets we are free to connect with and push others. Making each of us each other's MVP.

THE Jackson RESOURCE CENTER™

SUPPORT US



WEBSITE : www.reachjackson.org
PAYPAL : Paypal.me/reachjackson
CASHAPP : \$JRCJXN

FOLLOW US



[jacksonresourcecenter](https://www.facebook.com/jacksonresourcecenter)

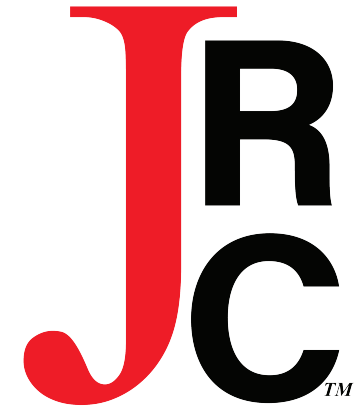
[@reachjacksonms](https://www.instagram.com/reachjacksonms)

VISIT US

To schedule a tour of one of our campuses
or to volunteer please contact us at

769.218.0008

www.reachjackson.org



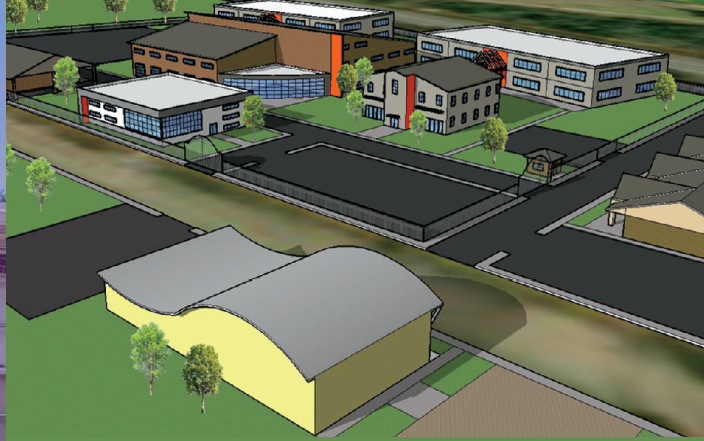
Where Deams Are Within REACH

THE Jackson RESOURCE CENTER™

Our Mission

is to be a multifaceted housing organization devoted to forming on and off-site partnerships that reduce homelessness and create sustainable communities through quality affordable housing, continued education, job skills training, and accessible social and medical services.

The Jackson Resource Center is a 501(c)(3) non-profit organization. All donations are tax-deductible.



WHO IS JRC

In 2007, with only a vision from God, Putalamus White, began the effort to create an all inclusive campus for homeless. The “one stop” design was born after months of research and visiting homeless resource and housing centers across the country.

Jackson Resource Center currently operates Mississippi’s 1st Permanent Supportive Housing Campus and a Maternity Group Home for young mothers (18-22) and their children.

The current growth and larger vision of help will bring service providers and those in need to a central “one stop” location that includes housing.

For more information please contact us.

We live by what we believe, not by what we can see.” 2 Corinthians 5:7

WHAT DOES JRC DO

The Jackson Resource Center sparks hope in hopeless situations through REACH. REACH has become the tag line acronym for what JRC believes changes lives. The acronym stands for Resource Empowerment Activates Change & Hope.

The current combined housing capacity of JRC is currently 37. With the addition of the 18-acre campus we will be able to house over 500 people at any given time through the low barrier, shelter program, The Courtyard and approximately 300 on the Transformational Campus. The Courtyard offers guests a safe place to sleep, hot meals, a place to shower, laundry, and outreach services such as mental and physical health care services.

Our current campuses offer onsite services that include Legal, Employment, Education and Housing Services, Life-Skills Training and Case Management. The 18-acre Campus will provide those services and more, to include Short-term residential housing, Substance abuse and mental health treatment, Childcare, Health Care, Animal Kennel and much more!

“In him we were also chosen, having been predestined according to the plan of him who works out everything in conformity with the purpose of his will” Ephesians 1:11

HOW DOES JRC DO IT

We intentionally seek out and form partnerships with organizations and agencies that have a desire to assist the homeless in changing their current situation.

The “**Person**” is at the center of all our services. We meet them where they are.

We are Trauma Informed. We recognize and understand the role trauma plays in the lives of those we serve.

We are Recovery Oriented. We work with our clients to help them recover from conditions associated with mental health, substance abuse and trauma.

We are Peer Supported. We recognize the importance of lived experience in those we serve.

We Collaborate. We work with 30+ partner organizations to provide comprehensive services and always expanding.

“Two people are better than one, because they get more done by working together.” Ecclesiastes 4:9